

PRODUCT CATALOGUE

Elegant by Design
Strongest by Trust...



HARDWARE & DOOR FITTINGS

RollaTM

R I C H N E S S O F L I F E I

Company Profile

Established in 2008 "ROLLA" has succeeded in manufacturing architectural door fittings matching the needs and expectations of domestic and overseas market. We continue to fulfil the customers aspirations with the help of over marketing team, backed by strong dealers network across the country. "ROLLA" has a committed team of professional and skilled manpower, equipped to working in company's state of the art manufacturing plant, it has a dedicated R & D division which is endlessly making innovations in "ROLLA" range of products. It has helped to diversify company's products in locks & hardware segments. Company's commitment and devotion has made "ROLLA" a popular brand in domestic & export market for builders hardware.

We assure our sincere services to our customers in the days to come.

Thank You...

Care Instructions

- As a general rule, we recommend wiping the fitting dry with a soft cloth after each use. In the case of light dirt, its sufficient clean the fitting with soft cloth.
- Please avoid using cleaning agents which contain hydrochloric acid, formic acid, acetic acid, phosphoric or chlorine bleaching substances. Also avoid abrasive cleaners and scouring pads.
- If Care Instruction are not followed, warranty claims may be denied



RL-1001

Size-14"
Finish - Antiq., S/G, N/S



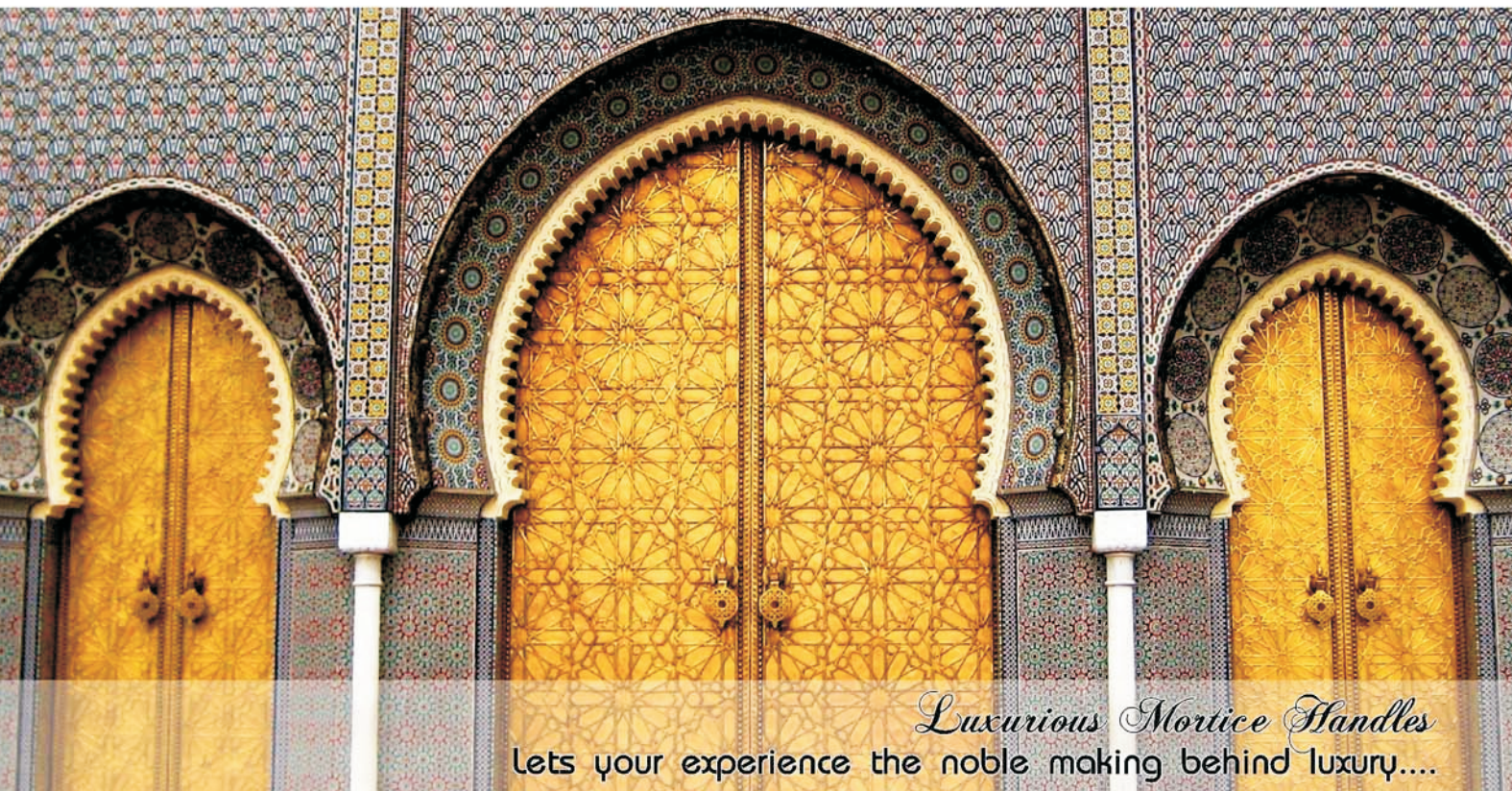
RL-1002

Size-11"
Finish - Antiq., S/G, N/S



RL-1003

Size-14"
Finish - Antiq., S/G, N/S



Luxurious Mortice Handles
Lets your experience the noble making behind luxury....



RL-1004

Size-14"
Finish - Antiq., S/G, N/S



RL-1005

Size-12"
Finish - Antiq., S/G, N/S



RL-1006

Size-12"
Finish - Antiq., S/G, N/S



RL-1007

Size-12"
Finish - Antiq., S/G, N/S



RL-1008

Size-12"
Finish - Antiq., S/G, N/S



RL-1009

Size-11"
Finish - Antiq., S/G, N/S



RL-1010

Size - 11"
Finish - Antiq., S/G, N/S
B/G, B/S, Wood Finish



ADORA

Size - 10", 8"
Finish - Antiq., S/G, N/S



KENT

Size - 10", 8"
Finish - Antiq., S/G, N/S



RL-2001

Size-8", 7"
Finish - Antiq., S/G, N/S



RL-2002

Size-8", 7"
Finish - Antiq., S/G, N/S

White Metal
ROSE HANDLES



RL-655

Finish - Antiq., N/S, B/S



RL-657

Finish - Antiq., N/S, B/S



RL-609

Size - 8" CY & KY
10" CY
Finish - Antiq., N/S, B/S, SS



RL-611

Size - 8" CY & KY
10" CY
Finish - Antiq., N/S, B/S, SS



RL-612

Size - 8" CY & KY
10" CY
Finish - Antiq., N/S, B/S, SS



RL-609

Size - 8" CY & KY
10" CY
Finish - Antiq., N/S, B/S, SS



Luxurious Mortice Handles
Lets your experience the noble making behind luxury....



RL-601

Size - 8" CY & KY
10" CY
Finish - Antiq., N/S, B/S, SS



RL-603

Size - 8" CY & KY
10" CY
Finish - Antiq., N/S, B/S, SS



RL-605

Size - 8" CY & KY
10" CY
Finish - Antiq., N/S, B/S, SS



RL-619

Size - 8" CY & KY
10" CY
Finish - Antiq., N/S, B/S, SS



RL-621

Size - 8" CY & KY
10" CY
Finish - Antiq., N/S, B/S, SS



RL-622

Size - 8" CY & KY
10" CY
Finish - Antiq., N/S, B/S, SS



HANDLE UNSPRUNG

Handles that operate without the assistance of a spring, but rely on the sprung follower within the lock case to return to the horizontal position.



RL-101
Size-10", 8"
Finish - Varnish SS



RL-102
Size-10", 8"
Finish - Varnish SS



RL-103
Size-10", 8"
Finish - Varnish SS



RL-104
Size-10", 8"
Finish - Varnish SS



RL-105
Size-10", 8"
Finish - Varnish SS



RL-1001
Size-10", 8"
Finish - Varnish SS



AN EXCLUSIVE VARNISH HANDLE

We try to provide you best design able products with best material quality and best finishes as like VARNISH FINISH on this product handle.



RL-G4
Size-8" CY & KY
Finish - SS, Antiq.



RL-G5
Size-8"
Finish - SS, Antiq.



RL-G6
Size-8"
Finish - SS, Antiq.



RL-G7
Size-8"
Finish - SS, Antiq.



RL-G8 Square
Size-8"
Finish - SS, Antiq.



RL-G20
Size-8"
Finish - SS, Antiq.



HANDLE UNSPRUNG

Handles that operate without the assistance of a spring, but rely on the sprung follower within the lock case to return to the horizontal position.



RL-301
Size - 8" CY & KY
10" CY
Finish - SS, Antiq.



RL-303
Size-8"
Finish - SS, Antiq.



RL-302
Size-8"
Finish - SS, Antiq.



RL-304
Size-8"
Finish - SS, Antiq.



RL-305
Size-8"
Finish - SS, Antiq.



RL-306
Size-8"
Finish - SS, Antiq.



RL-01
Size-4"
Finish - SS, Antiq.



RL-02
Size-4"
Finish - SS, Antiq.



RL-03
Size-4"
Finish - SS, Antiq.



RL-1201
Size-10"
Finish - Antiq., B/S



RL-1202
Size-10"
Finish - Antiq., B/S



RL-1203
Size-10"
Finish - Antiq., B/S



RL-1204
Size-10"
Finish - Antiq., B/S



RL-207
Size-7"
Finish - Antiq., B/S





RL-201

Size-7"
Finish - Antiq., B/S



RL-202

Size-7"
Finish - Antiq., B/S



RL-203

Size-7"
Finish - Antiq., B/S



RL-204

Size-7"
Finish - Antiq., B/S



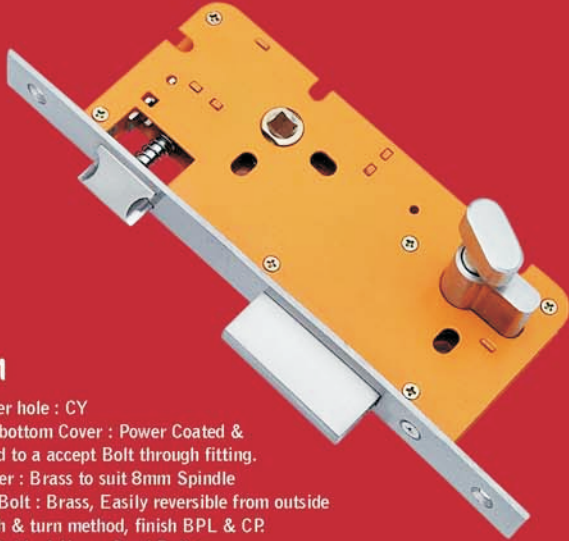
RL-205

Size-8"
Finish - Antiq., B/S



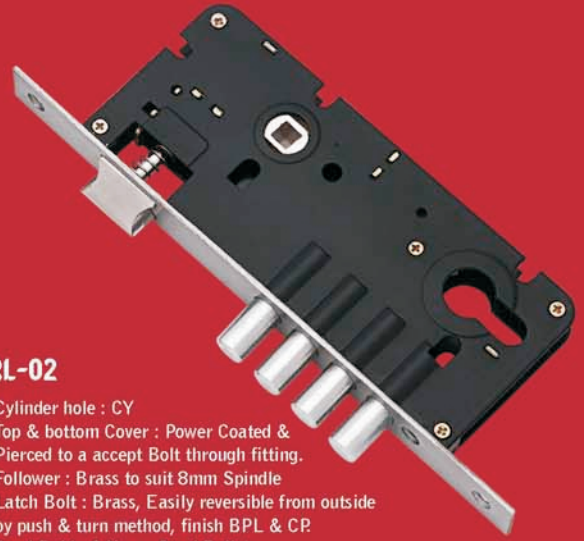
RL-206

Size-8"
Finish - Antiq., B/S



RL-01

- Cylinder hole : CY
- Top & bottom Cover : Power Coated & Pierced to accept Bolt through fitting.
- Follower : Brass to suit 8mm Spindle
- Latch Bolt : Brass, Easily reversible from outside by push & turn method, finish BPL & CP.
- Dead Bold : 4 Heavy Steel Bullets
- Fore-end & Striking Cram : Brass or Stainless Steel Finished to match with cylinder.



RL-02

- Cylinder hole : CY
- Top & bottom Cover : Power Coated & Pierced to accept Bolt through fitting.
- Follower : Brass to suit 8mm Spindle
- Latch Bolt : Brass, Easily reversible from outside by push & turn method, finish BPL & CP.
- Dead Bold : 4 Heavy Steel Bullets
- Fore-end & Striking Cram : Brass or Stainless Steel Finished to match with cylinder.



RL-03

- Cylinder hole : CY
- Top & bottom Cover : Power Coated & Pierced to accept Bolt through fitting.
- Follower : Brass to suit 8mm Spindle
- Latch Bolt : Brass, Easily reversible from outside by push & turn method, finish BPL & CP.
- Dead Bold : 4 Heavy Steel Bullets
- Fore-end & Striking Cram : Brass or Stainless Steel Finished to match with cylinder.



RL-04

- Cylinder hole : CY
- Top & bottom Cover : Power Coated & Pierced to accept Bolt through fitting.
- Follower : Brass to suit 8mm Spindle
- Latch Bolt : Brass, Easily reversible from outside by push & turn method, finish BPL & CP.
- Dead Bold : 4 Heavy Steel Bullets
- Fore-end & Striking Cram : Brass or Stainless Steel Finished to match with cylinder.



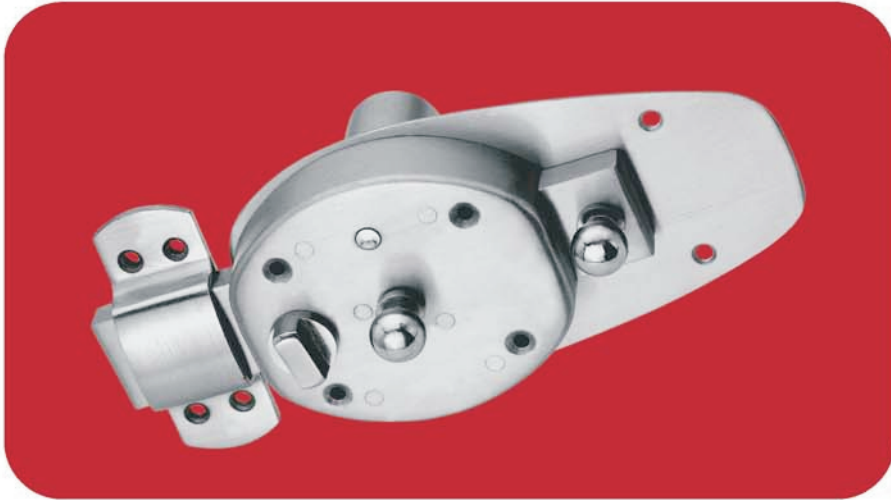
RL-011

- Steel Drawn Case - Power Coated
- Follower : Brass
- Latch Bolt easily reversible from outside of the case.
- Pierced to accept bolt through fittings.
- Fore-end & Striking cram in Stainless Steel.



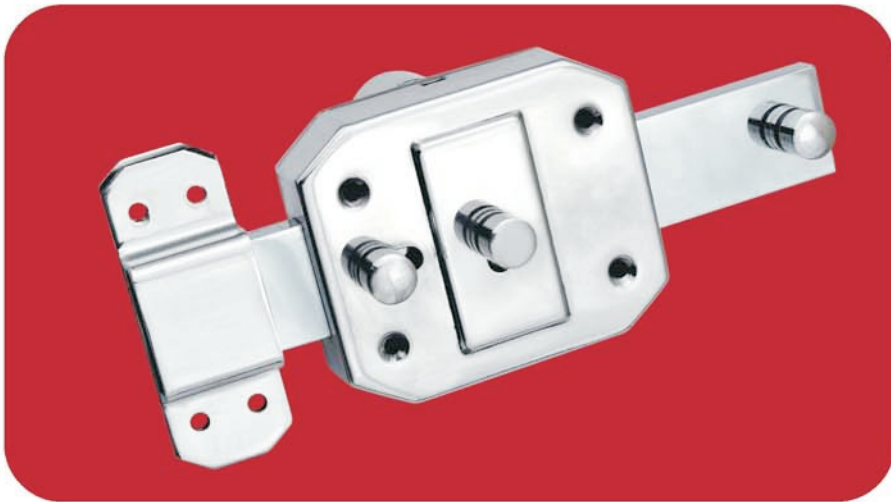
RL-012

- Steel Drawn Case - Power Coated
- Follower : Zinc Casted, Chrome Plated
- Latch Bolt easily reversible from outside of the case.
- Pierced to accept bolt through fittings.
- Fore-end cram in Stainless Steel Cover
- Striking cram in Stainless Steel.



Inter Lock Oval

- Mechanism : 4 & 6 Action Dead + Latch Bolt
Feature : Door hold back button
Keys : 14 Dimple Ultra Keys



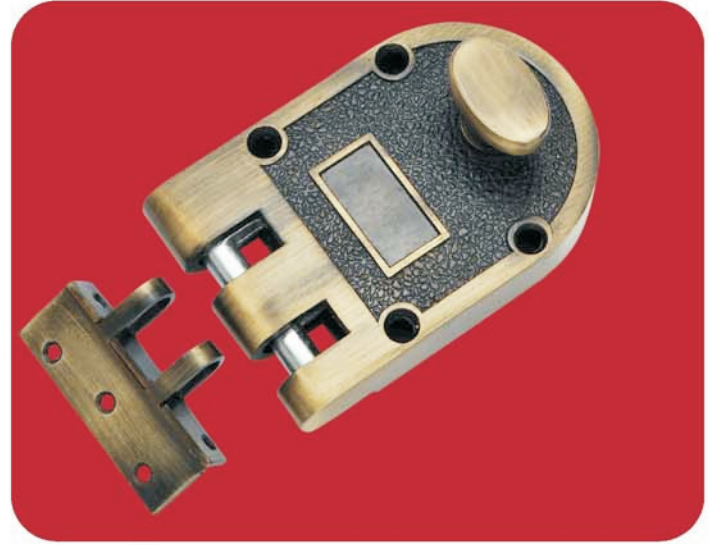
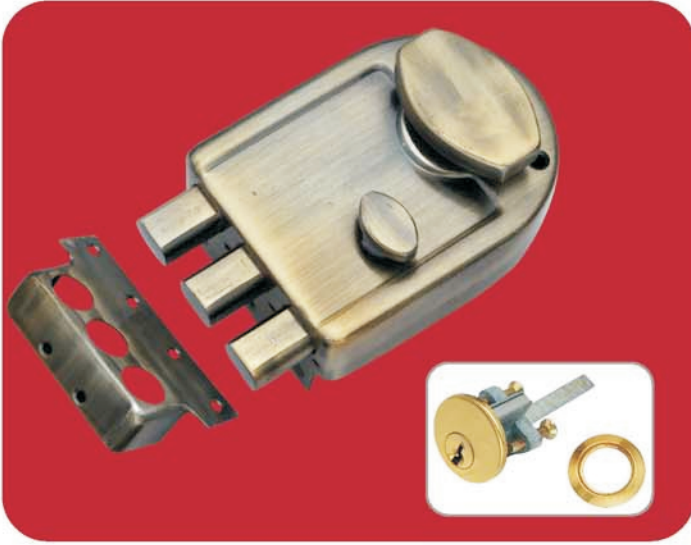
Inter Lock (304 Grade SS Body)

- Mechanism : 4 & 6 Action Dead + Latch Bolt
Feature : Door hold back button
Keys : Triple Row 14 Dimple Ultra Keys



Inter Lock Regular

- Mechanism : 3 & 6 Action Dead + Latch Bolt
Feature : Door hold back button
Keys : 14 Dimple Ultra keys



Tri Bolt

- Mechanism : Key From Outside & Knob From Inside
- Feature : Double Stroke 2 Dead Bolts Latch Bolt with Safety knobs
- Keys : 14 Dimple Ultra Keys

Verti Bolt

- Mechanism : Key From Outside & Knob From Inside
- Feature : Jimmy Droof
- Keys : 14 Dimple Ultra Keys



We Provide You The Luxurious Products of High Quality Material For Your Home Rhetoric....



RL D-BRACKET

Size- All size available

Finish - SS, CP

Material - Stainless Steel, Brass

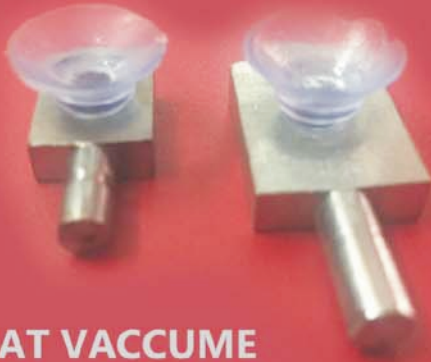


RL MIRROR HOLDER

Size- 6MM (Half & Full)

Finish - SS, CP

Material - Stainless Steel, Brass



RL BAT VACCUME

Size- Medium & Heavy

Finish - SS, CP

Material - Stainless Steel, Brass



RL GLASS STUD

Size- All size available

Finish - SS

Material - Stainless Steel



RL FOLDING BRACKET

Size- All size available

Finish - SS, CP

Material - Stainless Steel, Brass



RL L BAT

Size- Single & Double

Finish - SS, CP

Material - Stainless Steel, Brass, Alu



RL CLIP CATCHER

Size- Medium & Heavy

Finish - SS, CP

Material - Stainless Steel, Brass



RL MIRROR CAP

Size- All size Available

Finish - SS, CP

Material - Stainless Steel, Brass



RL F-BRACKET & ADJ

Size- All size Available

Finish - SS, CP

Material - Stainless Steel, Brass



RL CONCEAL

Size- 3/4", 1"

Finish - SS

Material - Stainless Steel



RL GATE HOOK

Size- All size Available

Finish - SL, Antiq, BPL, SS

Material - Brass



RL DOOR CLOSER

Size- 55kg, 90kg



RL TOWER BOLT

Size- All size available

Finish - Antiq, SS, S/L, BPL

Material - Brass



RL TOWER BOLT

Size- All size available

Finish - SS (Square & Round)

Material - Stainless Steel



RL LATCH

Size- 3"

Finish - Antiq, CP

Material - Brass



RL BEARING HINGES

Size- All size available

Finish - Antiq, SL

Material - Brass

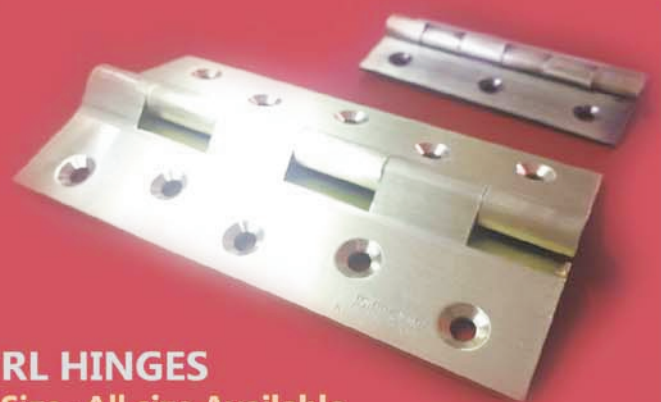


RL HINGES

Size- All size Available

Finish - SS (Welded & Normal)

Material - Stainless Steel



RL HINGES

Size- All size Available

Finish - BPL, Antiq, S/L, SS

Material - Brass



RL-1051

Size-12"
Finish - Antiq., S/G, N/S



RL-1052

Size-11"
Finish - Antiq., S/G, N/S



RL-1053

Size - 11"
Finish - Antiq., S/G, N/S
Vernish



RL-1054

Size-11"
Finish - Antiq., S/G, N/S



RL-1055

Size - 11"
Finish - Antiq., S/G, N/S
B/S, Vernish



RL-1056

Size - 11"
Finish - Antiq., S/G, N/S
B/S



RL-1057

Size - 10"
Finish - Antiq., S/G, N/S



RL-1058

Size - 10", 8"
Finish - Antiq., S/G, N/S



RL-1059

Size - 10"
Finish - Antiq., S/G, N/S



RL-1060

Size - 10"
Finish - Antiq., S/G, N/S
B/G



RL-1061

Size - 10"
Finish - Antiq., S/G, N/S
B/G



RL-1062

Size - 10", 8"
Finish - Antiq., S/G, N/S
B/G



RL-1063
Size - 10", 8"
Finish - Antiq., S/G, N/S



RL-1064
Size - 10", 8"
Finish - Antiq., S/G, N/S



RL-1065
Size - 10", 8"
Finish - Antiq., S/G, N/S



RL-1066
Size - 10", 8"
Finish - Antiq., S/G, N/S



RL-1067
Size - 10", 8"
Finish - Antiq., S/G, N/S



RL-1068
Size - 10", 8"
Finish - Antiq., S/G, N/S
B/G



RL-2021

Size-8", 7"
Finish - Antiq., S/G, N/S



RL-2023

Size-8", 7"
Finish - Antiq., S/G, N/S



RL-2022

Size-8", 7"
Finish - Antiq., S/G, N/S



RL-2024

Size-8", 7"
Finish - Antiq., S/G, N/S



RL-2026

Size-11", 8"
Finish - Antiq., S/G, N/S



RL-2025

Size-9", 8"
Finish - Antiq., S/G, N/S



HANDLE UNSPRUNG

Handles that operate without the assistance of a spring, but rely on the sprung follower within the lock case to return to the horizontal position.



RL-602

Size-10", 8"
Finish - Antiq., N/S, B/S



RL-607

Size-10", 8"
Finish - Antiq., N/S, B/S



RL-606

Size-10", 8"
Finish - Antiq., N/S, B/S



RL-608

Size-10", 8"
Finish - Antiq., N/S, B/S



RL-609

Size-10", 8"
Finish - Antiq., N/S, B/S



RL-611

Size-10", 8"
Finish - Antiq., N/S, B/S



HANDLE UNSPRUNG

Handles that operate without the assistance of a spring, but rely on the sprung follower within the lock case to return to the horizontal position.



RL-612

Size-10", 8"
Finish - Antiq., N/S, B/S



RL-613

Size-10", 8"
Finish - Antiq., N/S, B/S



RL-615

Size-10", 8"
Finish - Antiq., N/S, B/S



RL-616

Size-10", 8"
Finish - Antiq., N/S, B/S



RL-617

Size-10", 8"
Finish - Antiq., N/S, B/S



RL-620

Size-10", 8"
Finish - Antiq., N/S, B/S



HANDLE UNSPRUNG

Handles that operate without the assistance of a spring, but rely on the sprung follower within the lock case to return to the horizontal position.



RL-651
Finish - Antiq., N/S, B/S



RL-652
Finish - Antiq., N/S, B/S



RL-653
Finish - Antiq., N/S, B/S



RL-654
Finish - Antiq., N/S, B/S



RL-656
Finish - Antiq., N/S, B/S



We Provide You The Luxurious Products of High Quality Material For Your Home Rhetoric....



RL-2101

Size - 8", 10", 12", 14",
16", 18", 20"
Finish - Antiq., S/S, N/S, S/G,



RL-2102

Size - 8", 10", 12", 14",
16", 18", 20"
Finish - Antiq., S/S, N/S, S/G,



RL-2103

Size - 8", 10", 12", 14",
16", 18", 20"
Finish - Antiq., S/S, N/S, S/G,



RL-2104

Size - 8", 10", 12", 14",
16", 18", 20"
Finish - Antiq., S/S, N/S, S/G,



RL-2105

Size - 8", 10", 12", 14",
16", 18", 20"
Finish - Antiq., S/S, N/S, S/G,



RL-2106

Size - 8", 10", 12", 14",
16", 18", 20"
Finish - Antiq., S/S, N/S, S/G,



RL-501

Size - 8", 10", 12", 14",
16", 18", 20"
Finish - Antiq., S/S, N/S, S/G,



RL-502

Size - 8", 10", 12", 14",
16", 18", 20"
Finish - Antiq., S/S, N/S, S/G,



RL-503

Size - 8", 10", 12", 14",
16", 18", 20"
Finish - Antiq., S/S, N/S, S/G,



RL-504

Size - 8", 10", 12", 14",
16", 18", 20"
Finish - Antiq., S/S, N/S, S/G,

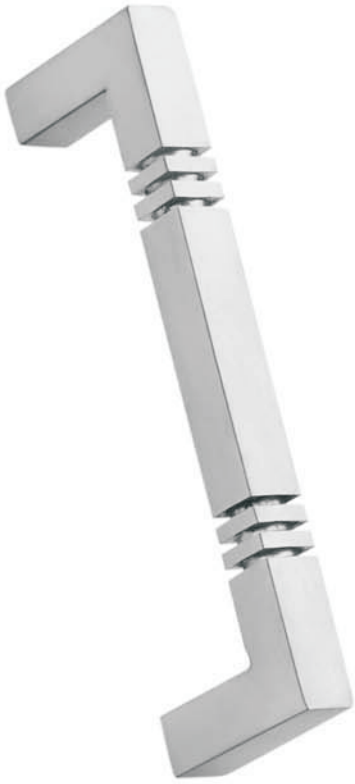


RL-505

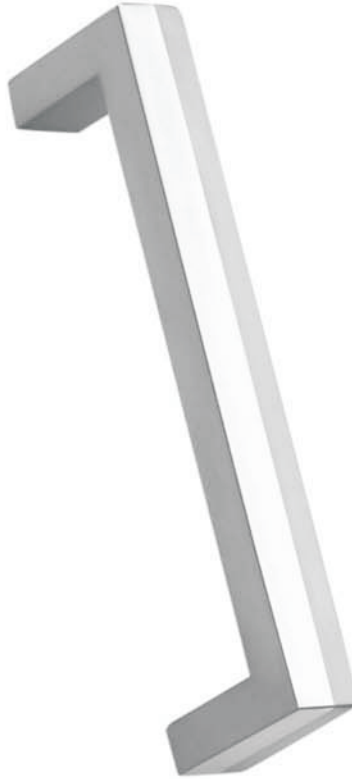
Size - 8", 10", 12", 14",
16", 18", 20"
Finish - Antiq., S/S, N/S, S/G,

Pull Handles are available in variety of designs. Kindly check each individual specification sheet if you require a product that assists in full filling your choice of a dream handle.

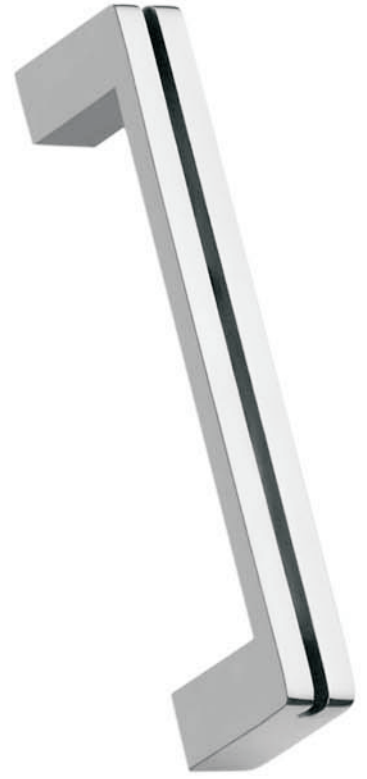




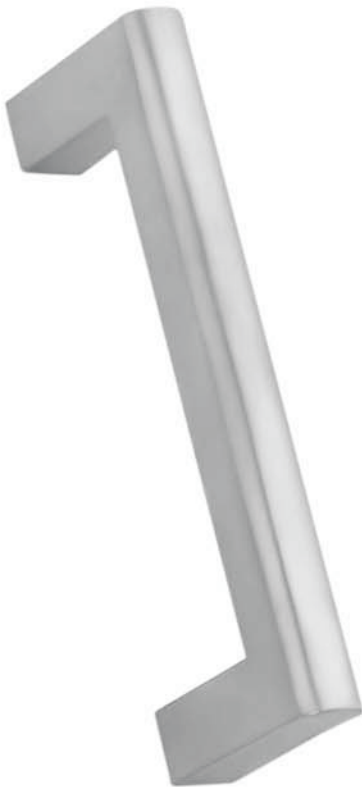
RL-401
Size-3", 4", 6"



RL-402
Size-3", 4", 6"



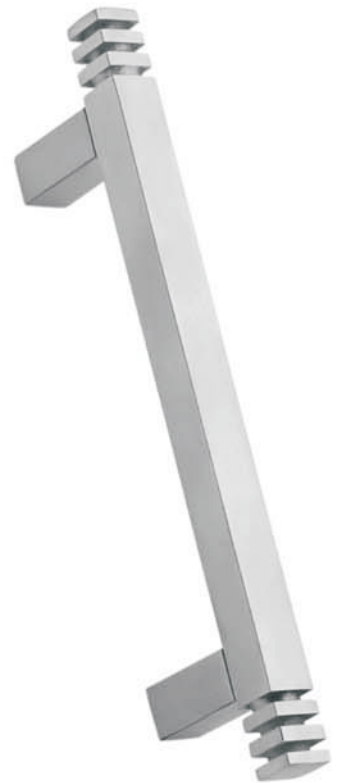
RL-403
Size-3", 4", 6"



RL-404
Size-3", 4", 6"



RL-405
Size-3", 4", 6"



RL-406
Size-3", 4", 6"



RL-407
Size-3", 4", 6"



RL-408
Size-3", 4", 6"



RL-409
Size-3", 4", 6"



RL-410
Size-3", 4", 6"



RL-411
Size-3", 4", 6"



RL-412
Size-3", 4", 6"



RL-413
Size-3", 4", 6"



RL-414
Size-3", 4", 6"



RL-415
Size-3", 4", 6"



RL-416
Size-3", 4", 6"



RL-417
Size-3", 4", 6"

- Cabinet Handles are most commonly used in places like cupboards.



Rolla™

R I C H N E S S O F L I F E I



Marketed by :
VOXOVO International, India
Mail : rollaindia@gmail.com
[facebook.com/Rollaindia](https://www.facebook.com/Rollaindia)
www.rollaindia.com
+91 495 2422007 / +91 90725 44007